

Specialty Products, Inc. (SPI) is a pioneer and leading innovator in the polyurea protective coatings industry. SPI's corporate philosophy and passion focuses on continuing to raise the industry bar with cutting edge solutions.

SPI's advanced polyurea products are the next evolution of protective coatings for the Industrial Flooring Industry. These ultra high-strength, elastomeric, polyurea coatings simply outperform epoxy, polyurethane, and other hybrid products.

SPI POLYUREA ADVANTAGES

- Stronger, more durable, longer service life for increased ROI
- Excellent resistance to many chemicals and hydrocarbons
- Higher elongation, greater flexibility and won't crack or peel like epoxy. Able to withstand substrate expansion and contraction caused by harsh annual weather cycles
- High build - apply to any thickness in one application
- Fast-set - rapid cure, return to service within hours, not days
- Hydrophobic - relatively unaffected by cool surfaces during the application process
- Apply in wider-range of temperatures (below 0° to >100° F)
- Contains 100% solids, no VOCs, solvents or ozone depleting ingredients



Commercial construction - concrete waterproofing and protection

Specialty Products, Inc. is widely recognized as a global market leader and innovator in manufacturing polyurea elastomeric coatings, polyurethane foam systems, and plural-component application equipment. SPI's products are manufactured under a stringent quality assurance program. SPI offers year-round 24/7 technical support, backed by a dedicated staff with over 150 years of collective industry experience. For over 37 years, our customers have relied on SPI's industry leading products and unmatched technical support. We invite you to experience the SPI service difference!



www.specialty-products.com

PROTECTIVE COATING SOLUTIONS Industrial Flooring

info@specialty-products.com
1.800.627.0773 | 253.588.7101

CORPORATE HEADQUARTERS
2410 104th Street Court South Suite D
Lakewood, WA 98499

ANCHORAGE, AK
1425 Spar Avenue
Anchorage, AK 99501

ROWLETT, TX
2601 Lawing Lane
Rowlett, TX 75088

INTERNATIONAL
1.800.627.0773
international_sales@specialty-products.com



Leading GRACO® Equipment and Parts Distributor



Industrial floors, loading zones, parking garages and other high traffic areas are constantly exposed to heavy wear and tear. Forklifts, vehicles, equipment, foot-traffic, everyday operating conditions, even spills of chemicals or other substances can prematurely damage floor surfaces. Slippery surfaces or damaged floors with uneven areas can also create potential fall hazards. Repairing or replacing existing floors can be expensive and create costly operational downtime.

SPI's elastomeric protective coating solutions provide a tough, impermeable, seamless barrier that extends the floor's service life at a fraction of the replacement cost. These ultra high-strength, flexible coatings are able to move with substrate expansion and contraction. They provide a durable surface that is abrasion resistant and able to withstand repeated power washing and cleaning. Non-skid or slip resistant surfaces can also be achieved to help minimize fall or trip hazards. The fast-set or rapid curing properties of the coating allow for a quick return to service.

INDUSTRIAL FLOORING SOLUTIONS

Warehouse and manufacturing facility protective floor coating

Food and agriculture, medical, veterinarian, & clean room floors

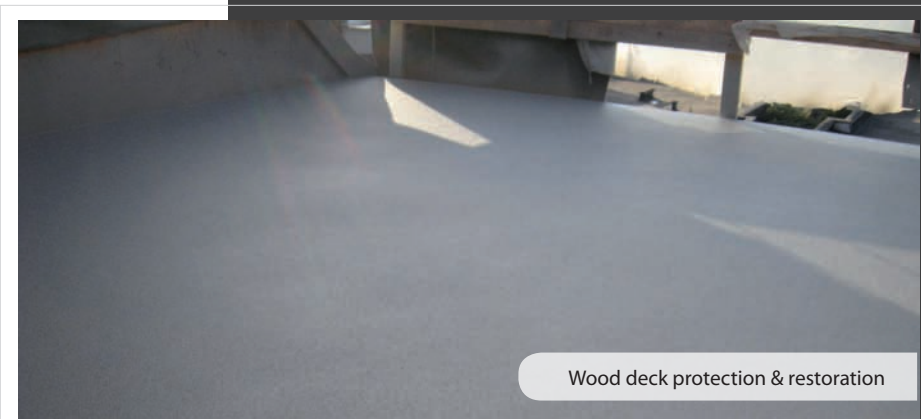
Protecting floor surfaces in loading areas and forklift zones

Concrete joint fill or crack repair

Non-skid or slip resistant floor coating



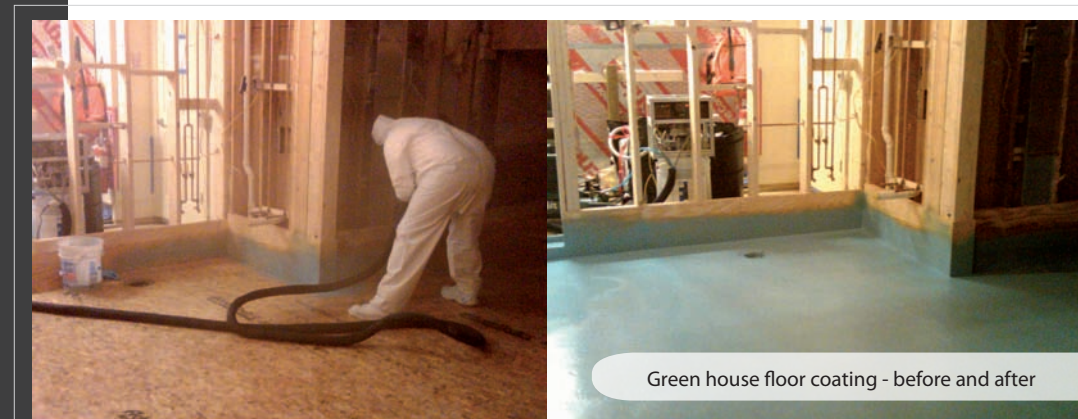
Clean room floor - protective coating



Wood deck protection & restoration



Industrial floor coating



Green house floor coating - before and after

FEATURED INDUSTRY SOLUTIONS

K5™

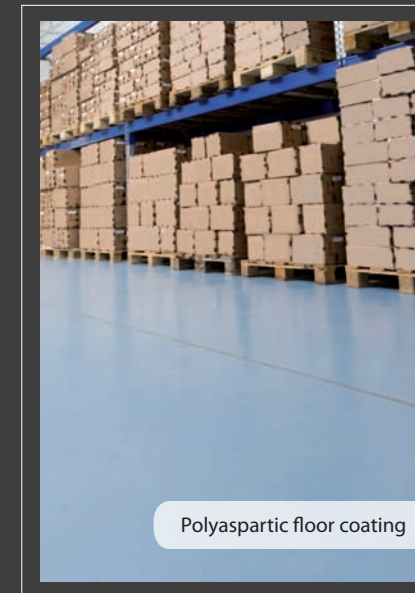
K5™ is an ultra high-strength, high-elongation polyurea, originally developed as a resilient blast resistant polymer. Soon after, it was discovered that K5™ is exceptionally resistant to abrasion, compared to other spray applied coatings. K5™ can be sprayed on to virtually any surface configuration, at any thickness. Therefore, it can be selectively applied to high wear areas.

Polyshield HT™

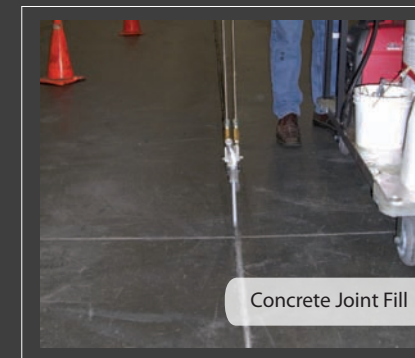
Polyshield HT™ is the work-horse of the polyurea protective coating industry. Millions of square feet of this product have been successfully applied worldwide. This advanced coating combines high elongation and tensile strength properties to form a tough, flexible, resilient monolithic membrane with water and chemical resistance.

HT-SLOW™

Polyshield HT-Slow™ is a state-of-the-art, high-performance, sprayed, plural-component, pure polyurea elastomer. This system is based on amine-terminated polyether resins, amine chain extenders, and prepolymers. It provides a flexible, tough, resilient monolithic membrane with water and chemical resistance. Extended tack time to allow deep surface penetration and adding non-skid aggregates into the coating.



Polyaspartic floor coating



Concrete Joint Fill

The toughest and most durable protective coatings in the industry

Specialty Products has over 40 unique polyurea elastomeric coatings with a wide range of physical properties to meet your specific project requirements. SPI only produces 100% solids, pure polyurea coatings that contain no VOCs, solvents, or harmful ozone depleting ingredients. Our knowledgeable team of industry experts will work closely with you from your project's beginning to the end, providing reliable coating solutions, SSPC/NACE standards, project specifications, and unsurpassed 365-day, 24/7 technical support.

FEATURED INDUSTRY SOLUTIONS

Dry Properties & Test Methods	Polyshield HT-Slow™	Polyshield HT™	K5™
Tensile Strength, psi ASTM D412	3966 psi	4219 psi	>5500 psi
Elongation ASTM D 412	526%	619%	>300%
Tear Resistance, pli ASTM D 624	457 pli ± 50	612 pli ± 50	>690 pli Avg.
Shore D Hardness ASTM D 2240	42 D	52-44 D	57 D
Abrasion Resistance ASTM D 4060	C 17 Wheel 5.3 mg. lost	H 18 Wheel 109 mg. lost	H 18 Wheel 33.0 mg. lost
Application Temperature	< 0° to > 100°F	< 0° to > 100°F	< 0° to > 100°F
Service Temperature	-60° to +250°F	-60° to +250°F	-40° to +200°F
Return to Service	24 Hours	24 Hours	24 Hours